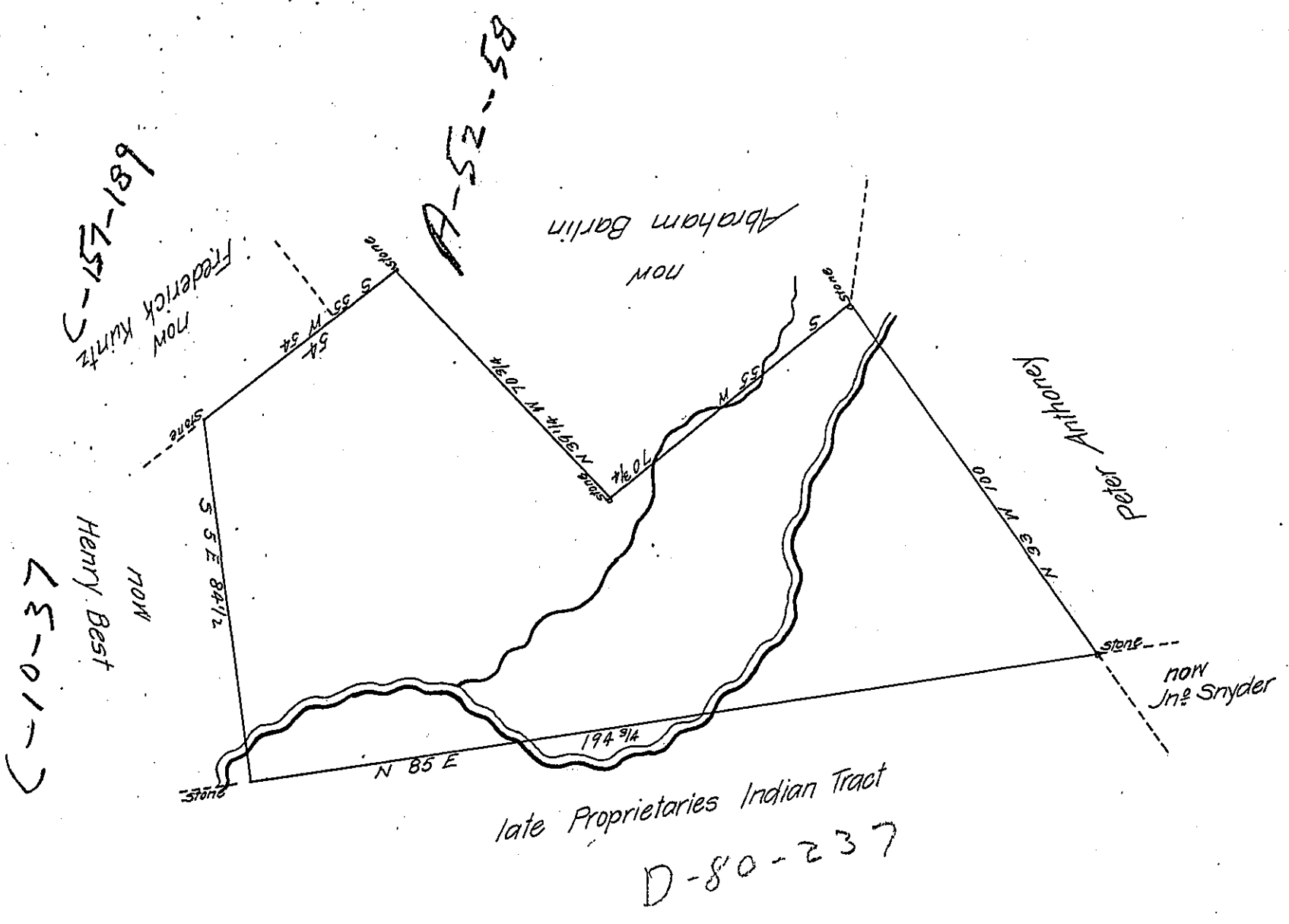


FORM NO 1.



By Vertue of a Warrant dated the 26<sup>th</sup> July 1755. Surveyed the 27<sup>th</sup> day of February 1813 to Edmond  
 Tholl the above described tract of land Situate in Lehi Township in the County of Northampton. Contain-  
 ing Eighty four acres and the allowance of six P Cent. Run agreeable to the old lines found all round  
 To Andrew Porter Esquire } Geo. Palmer D.S.  
 Surveyor General }

IN TESTIMONY that the above is a copy of the original remaining on file in  
 the Department of Internal Affairs of Pennsylvania, made  
 conformably to an Act of Assembly approved the 16th day of  
 February, 1833, I have hereunto set my Hand and caused  
 the Seal of said Department to be affixed at Harrisburg,  
 this twentythird day of May 1907

*Henry Howell*  
 Secretary of Internal Affairs.